



PLAN



Wellness Bharat Billionaires Club

Rise of India's Wellness Revolution

India is entering the world's
largest Wellness Economy

Daily Compensation Plan
www.WellnessBharat.com



Wellness Bharat Billionaires Club Compensation (WB2 Club) Plan – Overview

Introduction

The ABC Plan is an entrepreneurial reward system designed to empower individuals to build a wellness-based business while participating in India's rapidly growing wellness economy.

It enables members to:

- Build structured left-right teams
- Develop and mentor leaders
- Promote wellness products & services
- Generate multiple income streams
- Contribute to the Wellness Bharat movement

How the System Works

- ABC Plan operates on a binary system, where each member builds two teams:
- **← Left Team | Right Team**
- When one member joins on each side, a pair is formed, generating matching income.

Key Terms

- **Member:** A person who joins WB² by purchasing a starter package
- **Sponsor:** The person who introduces a new member
- **Pair:** 1 Left + 1 Right = Income
- **PSV (Product Sales Value):** Internal system to measure business volume
- **Starter Package:** 2250 PSV

Income Foundation

- Income is generated through pair matching and team growth
- Higher team volume = higher income potential
- System supports both active income and long-term residual income

The Opportunity
Simple System. Scalable Growth. Unlimited Potential.

Income Criteria



Binary
Matching
Income



Mentor
Bonus



Freedom
Income



Rank &
Rewards

Package Overview

Particulars	Value
Joining	₹4,500
Product Value	Same as paid
PSV	2,250

Get world-class wellness products of your choice with business activation.

Binary Income System

- Build two teams: Left | Right
- 1 Left + 1 Right = 1 Pair → ₹225 Income
- Pair Ratio: 1:1 (4500 PSV)

Example: 10 Left + 10 Right = 10 Pairs → ₹2,250

- **Weaker Leg Principle**
- Income is calculated on the weaker team
- **Example:** Left 50 | Right 40 → Paid: 40 pairs
- Balance carries forward

Key Highlights

- Daily closing: 12:00 Midnight (IST)
- Max: 80 pairs/day → ₹80,000/day
- Unmatched pairs carry forward

Matching & Payout Rules

- First match: 1:2 or 2:1, then 1:1 unlimited depth
- Weekly payout: Every Thursday (Auto-transfer)
- Direct credit to registered bank account

Repurchase & Deductions

- Pre-launch: No repurchase required
- Post launch: ₹1500/month (15th-end) for Freedom Bonus
- TDS applicable + 10% processing charges

**Simple System. Daily
Income. Scalable Growth.**



What is Mentor Bonus?

- Earn 10% income for 5-level from the leaders you develop and support.
- Whenever your team earns binary income, you earn a share as a mentor.

How It Works

- **Binary per pair:** ₹225
- **Mentor earns:** ₹22.50 per pair (10%)
- Applicable up to 5 levels (Total 50%)

Example

If a leader earns ₹18,000/day (80pairs):

☞ **Your Mentor Bonus = ₹18,00/day**

Level Structure

Level	Bonus
Level 1-5	10% each (₹22.5 per pair)

Growth Potential

Level	Members	Income per Member	Your 10% Income	Total Daily Income
Level 1	2	₹18,000	₹1,800	₹3,600
Level 2	4	₹18,000	₹1,800	₹7,200
Level 3	8	₹18,000	₹1,800	₹14,400
Level 4	16	₹18,000	₹1,800	₹28,800
Level 5	32	₹18,000	₹1,800	₹57,600
In this case, your Daily Mentor Bonus				₹1,11,600

 Monthly Total (30 Days): **₹33,48,000**

Power Insight

- ☞ Just 2 strong directs
- ☞ Growing into 5 levels (62 people)
- ☞ Can generate ₹33+ Lakhs/month Mentor Income alone



**“Build 2 → Grow 5 Levels
→ Create ₹30+ Lakh
Monthly Leadership
Income”**

Freedom Bonus (Weekly)

Earn Freedom Income by building your direct team.

- ☛ 2 Directs = ₹150/week
- ☛ Income continues for 90 weeks

Income Potential

Directs	Weekly Income	Total (90 Weeks)
2	₹150	₹13,500
10	₹750	₹67,500
20	₹1,500	₹1,35,000
100	₹75,00	₹6,75,000

- ✓ Independent of Binary Income
- ✓ Grows with your direct team

The Real Freedom (Upgrade Option)

Option 1 – Steady Income

₹150/week → ₹13,500 (90 weeks)

Option 2 – REAL FREEDOM (Recommended)

☛ Convert to ₹15000 Product Value

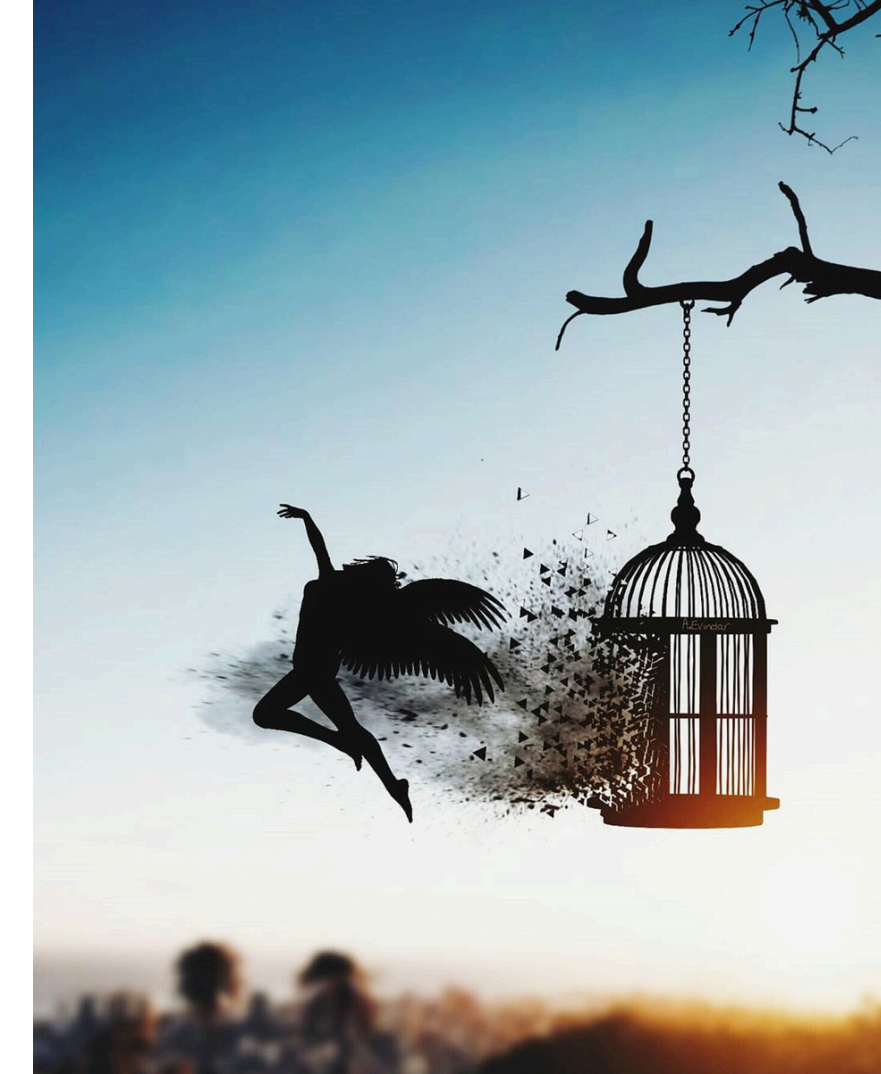
- ✓ Higher Value
- ✓ Instant Access
- ✓ No Waiting

⚡ Why Choose Real Freedom?

- Instant benefit vs delayed income
- Higher value than cash
- Boost product usage & retail confidence

🛒 pWallet Utilization (Simple Rule)

- Redeem up to ₹5000/month (MRP)
- Complete usage in 3 months
- ✓ Pay 5% GST
- ✓ Handling: ₹250 per ₹5000



The Formula

**Build Directs →
Create Pairs →
Choose Freedom
→ Enjoy Value**

Lifetime Rewards (LTR)



20 Level of Abundance



Rank Achievement Rewards



Build Teams • Unlock Rewards

- Earn ranks by building balanced binary teams.
- **Each pair** = 2 members + 4500 PSV → More pairs = Higher rewards.

What You Gain

- Cash & Lifestyle Rewards
- Trips, Cars & Villas
- Crores-Level Income Potential

✓ **Rewards are progressive at every level**



1. Smooth Early Growth

- Achievable early milestones
- Motivates beginners



2. Strong Mid-Level Wealth

- ₹10L – ₹1Cr zone very attractive
- Real leadership zone



3. Massive Top-End Aspiration

- ₹50 Cr reward
- ₹100 Cr+ cumulative

Core Leadership Ranks (Level 1-14)

Lvl	Rank	Pairs	Reward Budget (₹)	Reward Type
1	Wellness Executive	10	1,000	pWallet Value
2	Senior Executive	25	2,500	
3	Assistant Manager	50	5,000	Cash Rewards
4	Deputy Manager	100	10,000	
5	Branch Manager	250	25,000	Mobile/Laptop
6	Area Head	600	60,000	Thailand Trip
7	Regional Head	1,500	150,000	Dubai/Malaysia+Cash
8	Zonal Head	3,000	300,000	Foreign Trip+Car Fund
9	Vice President	6,000	600,000	Car Fund + 3 Lakh
10	President	10,000	1,000,000	Car Fund + 7 Lakh
11	Executive Director	20,000	2,000,000	XUV 7XO + 15 Lakh
12	National Brand Ambassador	35,000	3,500,000	Mercedes + 20 Lakh
13	Global Brand Ambassador	70,000	7,000,000	BMW + 50 Lakh
14	Universal Brand Ambassador	150,000	15,000,000	Jaguar + 1.1 Cr

Elite & Legacy Leadership (Level 15-20)

Lvl	Rank	Pairs	Reward (₹)	Reward Type
15	Crown Ambassador	300,000	30,000,000	BMW X7 + 2.5 Cr
16	Global Crown Ambassador	600,000	60,000,000	Range Rover + 5 Cr
17	Presidential Crown Ambassador	1,000,000	100,000,000	Luxury Car + Villa + 5 Cr
18	Diamond Crown Ambassador	2,000,000	200,000,000	Luxury Car + Villa + 15 Cr
19	Royal Diamond Ambassador	5,000,000	350,000,000	Luxury Car + Villa + 25 Cr
20	Legacy Global Ambassador	10,000,000	500,000,000	Luxury Car + Villa + 40 Cr

Total Cumulative Rewards

₹ 126+ Crores



Package Upgrade Ladder



Package	Price	PSV	Max Daily Income	Avg Monthly Income	Weekly Freedom Income (2 Directs)
<i>Starter</i>	₹4,500	2,250	₹18000	₹8,10,000	₹150
<i>Pro Builder</i>	₹9,000	4,500	₹36000	₹16,62,000	₹300
<i>Elite Leader</i>	₹18,000	9,000	₹72000	₹32,40,000	₹600

Start with ₹4,500 and upgrade to higher packages to increase your income, unlock benefits, and grow faster.

Higher packages offer:

- More earning potential
- Leadership privileges
- Access to advanced products & training

WB Opportunity Centres

(Franchisee Option)

The Wellness Bharat Opportunity Centre (WBOC) is a franchise model within **India's ₹6 Lakh Crore Ayurveda & Wellness economy**. It enables individuals to set up a local wellness retail and distribution centre using scientifically developed Ayurvedic products.

WBOC creates sustainable income, retail growth, and community wellness impact—bridging healthcare with entrepreneurship.

Particular	Value
Startup Amount/Unit	₹1,00,000
Stock Value	100%
Billing Rights	Yes (₹13,500 per unit)
Franchise Support Fund	₹2,500/month (40 months)
SRI (Spot Rebate on Invoice)	1%
Principle Amount Refund	100% Cash/Stock Surrender

Multi-Unit Benefit Structure (40 Months)

Units	Investment (₹)	Monthly Support (₹)	Total Support (₹)	SRI Benefit	Locking Period	Principle Refund	Total Return	Upgrade
1	100,000	2,500	100,000	1%	40 Months	Recover your capital in 40 months – continue to earn beyond.	200% in 40 Months	Upgradable to Super Mart & Mega Mart (3%-6% SRI)
2	200,000	5,000	200,000	1%				
5	500,000	12,500	500,000	1%				
10	1,000,000	25,000	1,000,000	1%				
25	2,500,000	62,500	2,500,000	1%				

Key Advantages

- ✓ 100% stock-backed investment
- ✓ Monthly assured support for 40 months
- ✓ Retail + billing rights
- ✓ Additional earnings via SRI (invoice rebate)
- ✓ Participation in high-growth wellness economy

Terms & Conditions (Framework)

- Applicants may purchase multiple units without upper limit
- Each unit is treated as an independent franchise entitlement
- Lock-in period: 40 months from activation date
- Franchise Support Fund is disbursed monthly as per policy
- SRI (Spot Rebate Incentive) is applicable on eligible invoicing

The company reserves the right to:

- Modify operational policies in compliance with regulations
- Suspend or terminate agreements in case of non-compliance
- Settle all eligible dues at the time of termination

Franchise benefits are subject to:

- Active participation and compliance with company guidelines
- Adherence to product distribution and billing policies

Return & Continuity Model

₹1,00,000 per unit earns ₹2,500/month for 40 months (₹1,00,000 total). After 40 months, you may surrender and recover your investment, or continue for another 40 months to extend your returns.



Distributor Support Fund (DSF)

Earn from Franchise Growth

The **Distributor Support Fund (DSF)** is a monthly income designed to reward distributors for **developing and supporting WBOC franchise** units within their network.

Whenever a distributor directly sponsors a WBOC franchise, they earn **20% of the Monthly Support Fund (MSF)** generated by that franchise.

How It Works

- Each franchise earns: **₹2,500/month (MSF)**
- Distributor earns: **20% = ₹500/month** per franchise
- Paid monthly as long as the franchise remains active

DSF Mechanism

- **DSF** = 20% of Franchise Support Fund (MSF)
- Each Franchise earns: **₹2,500/month**
- Your DSF per Franchise: **₹500/month**

Example: 1 Franchise = **₹2,500**
→ You earn **₹500/month**

Power Insight

- Just **5 directs** → **5-level** expansion
- Creates **3,905 franchise network**
- Generates **₹19.5 Lakhs/month** passive DSF

Build Franchise Network → Earn Monthly Support Income

DSF Eligibility Table

Level	DSF %	Eligibility
Level 1	20%	1 Direct
Level 2	20%	2 Directs
Level 3	20%	3 Directs
Level 4	20%	4 Directs
Level 5	20%	5 Directs

Purpose of DSF

- Encourages **franchise expansion**
- Rewards **network building & support**
- Creates **stable, recurring monthly income**

5-Level Income Scenario (5x5 Model)

Assuming: Each person sponsors 5 franchises, up to 5 levels

Level	Franchises	Income per Franchise	Your DSF	Total Monthly	Overall Income
Level 1	5	₹2,500	₹500	₹2,500	Monthly DSF: ₹19,52,500 per month
Level 2	25	₹2,500	₹500	₹12,500	
Level 3	125	₹2,500	₹500	₹62,500	40 Months Cumulative Income: ₹7.81 Crores
Level 4	625	₹2,500	₹500	₹3,12,500	
Level 5	3,125	₹2,500	₹500	₹15,62,500	

The WB2 Management



Mr Rajanikant Sarma

CEO – UniBiotek (NE India) | Head – WB² Plan, Northeast

We proudly announce the strategic merger of UniBiotek (NE India) with Worldwide Wellness & Research Co., powering the Indian Wellness Revolution – WB² Plan.

Mr. Rajanikant Sarma takes charge as the Regional Head to drive expansion, leadership, and prosperity across Northeast India.

Sri Ajeet Kumar

Chief Network Officer – Wellness Bharat Billionaires Plan

A seasoned network leader with a proven track record across **RCM, Vestige, Dr. Nature & Herbalage**, Sri Ajeet Kumar brings decades of experience, multiple awards, and strong team-building expertise.

With a deep **spiritual foundation**, he is a **Vipassana practitioner** and **Quantum Meditation Mentor**, now leading the mission to build a **Healthy, Wealthy, and Self-Reliant India** through WB².



R&D: Worldwide
Wellness & Research

Sufi Sri Dr. Mohammad Aqeel Syed, PhD

Chief Mentor & R&D Head – Worldwide Wellness & Research Co.

A serial entrepreneur, researcher, and spiritual thinker working at the intersection of Ayurveda, modern science, and consciousness. **Inspired by “Who am I?”**, his work blends ancient wisdom with scientific innovation, creating scalable systems in **wellness, healing, and human transformation** through **Herbalage, Quantum Yog, and WB²**.

His vision: to build a healthy, self-reliant India and position it as a global wellness leader.

A seeker of truth. A builder of systems. A traveler within.





Wellness Bharat
Billionaires Club
Rise of India's Wellness Revolution



*"Business is not just earning money
– it is creating value, building
people, and growing wealth through
products and purpose."*

THANKS

Daily Compensation Plan
www.WellnessBharat.com



933 69 44445

Satellite Office: Worldwide Wellness & Research
Co. LBS Road, Civili Lines, Prayagraj - 211001 (India)